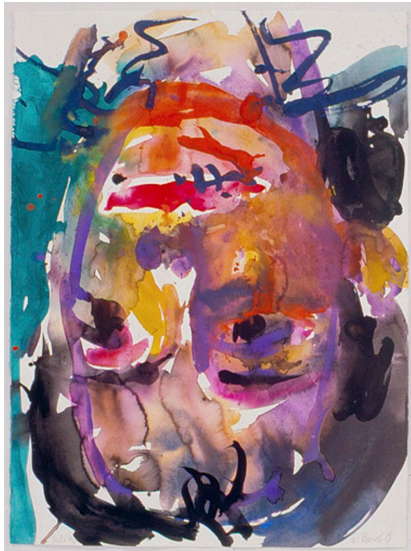




Face Values

June 9 – July 28, 2023



Left to right: Georg Baselitz, *Mutter Lieselotte*, July 1996. © Georg Baselitz; Piet Mondrian, *Self-Portrait*, 1911. © Piet Mondrian

“...The face is not “seen”. It can only be embraced by your thought processes: it is uncontainable, it takes you beyond.”
– Emmanuel Levinas

“The face is a politics.”
– Deleuze and Guattari

New York, NY – June 5, 2023 – 125 Newbury presents *Face Values*, a group exhibition that brings together artists who deal with the problem of the human face. Encompassing painting, drawing, and photography, the exhibition includes the work of more than twenty artists who employ a diverse range of practices to explore a shared set of questions: How do we recognize a person in a face? When is a portrait a likeness and when is it an icon? When is a face a mask, and when is it a stranger, a lover, a friend? Addressing these and other questions, the works in this exhibition confront the human face in all its complexity, intimacy, and strangeness.

The exhibition includes works by Richard Avedon, Georg Baselitz, Amoako Bofo, Chuck Close, Eric Fischl, Alex Katz, Nina Katchadourian, David Hockney, Peter Hujar, Ana Mendieta, Piet Mondrian, Gordon Parks, Irving Penn, Elizabeth Peyton, Andy Robert, Lucas Samaras, Julian Schnabel, Kiki Smith, Papay Solomon, Henry Taylor, Andy Warhol, Sydney Vernon, and Zhang Huan. *Face Values* opens June 9 at the gallery’s 395 Broadway location in Tribeca and remains on view through July 28.



From Andy Warhol's infamous depictions of instantly recognizable celebrity visages to Zhang Huan's ash paintings of anonymous historical figures, the face reveals itself as an ideology: a locus where mythology is encoded, memory transmitted, and desire crystallized. But the face is also a visual structure, which Piet Mondrian explores in a 1911 self-portrait that hovers on the knife-edge between figuration and abstraction. Taking up this tradition of modernist fragmentation, the analytical images of Chuck Close break down the face into constituent parts only to reconstitute it through the persistence of vision; while Georg Baselitz explodes and reconstructs the face through color, energy, and gesture.

In photographic self-portraits by Ana Mendieta, Nina Katchadourian, and Lucas Samaras, the face becomes an engine of performativity and a constructor of self. Photographs by Warhol and Irving Penn meanwhile look outward, using the camera's gaze to render the faces of others as icons. For Avedon, the face is a politics; while for Peter Hujar and Kiki Smith, it becomes a screen for pathos, a cipher for the martyr and the saint. In his self-portraits, Samaras reveals the face as a mirror, a totem for otherworldly selfhood—a condition literalized in Sydney Vernon's depiction of a face refracted in a hall of mirrors. Gordon Parks uses photography to unveil the everyday sublime in the faces of others, while the paintings of Amoako Bofo and Henry Taylor orchestrate the materiality of painting to hold likeness and identity in suspension. Eric Fischl, Elizabeth Peyton, and Andy Robert reveal the face as a site of closeness, care, and affinity.

Though radically different, each of the artists in the exhibition explores the possibilities of portraiture—as aesthetics, ethics, and politics—to investigate the powers of the human visage, asking how the face is also an interface: a threshold where we locate the specificity of a person.

Face Values Artist List

Richard Avedon
Georg Baselitz
Amoako Bofo
Chuck Close
Eric Fischl
Alex Katz
Nina Katchadourian
David Hockney
Peter Hujar
Ana Mendieta
Piet Mondrian
Gordon Parks
Irving Penn
Elizabeth Peyton
Andy Robert
Lucas Samaras



Julian Schnabel
Kiki Smith
Papay Solomon
Henry Taylor
Andy Warhol
Sydney Vernon
Zhang Huan

ABOUT 125 NEWBURY

125 Newbury is a project space in New York City helmed by Arne Glimcher, Founder and Chairman of Pace Gallery. Named for the original location of Pace, which Glimcher opened at 125 Newbury Street in Boston in 1960, the venture is located at 395 Broadway in Manhattan's Tribeca neighborhood, at the corner of Walker Street. Occupying a 3,900-square-foot ground-floor space in a landmark building with 17-foot ceilings, the interior of 125 Newbury has been fully renovated by Enrico Bonetti and Dominic Kozerski of Bonetti/Kozerski Architecture.

Guided by Glimcher's six decades of pioneering exhibition-making and steadfast commitment to close collaboration with artists, 125 Newbury presents up to five exhibitions per year, with a focus on both thematic group shows as well as solo exhibitions by emerging, established, and historical artists. The 125 Newbury team is led by directors Arne Glimcher, Kathleen McDonnell, Talia Rosen, and Oliver Shultz, who work together to develop cutting-edge and thought-provoking exhibitions that reflect a global, cross-generational perspective.

Press Inquiries:

Claire Hurley / Emily Kopp
press@125newbury.com
+1 703 901 1960 / +1 516 426 4146

@Follow125Newbury @125newbury